

Organic Waste Diversion Policy

How to comply:
Multi-Family Properties



CITY OF **ASPEN**

Agenda:

Introduction to
Organic Waste
Diversion
Ordinance

What do you have
to do

Waste haulers and
resources offered
by the City of Aspen

Next steps



Chapter 12.05. – ORGANIC WASTE DIVERSION

Problem: Aspen was throwing away LOTS of food.

1. Filling the landfill (doesn't break down)
2. Releases harmful emissions
3. Ending the lifecycle for our resources!

Solution: Making composting accessible for all.

1. Creates healthy soils
2. Less emissions
3. Gives a second life to resources



Applicability

Phase 1: October 15, 2023: All businesses with a retail food license.



Phase 2: January 15, 2026: All commercial businesses and multifamily properties.



Phase 3: January 15, 2028: Everyone within City limits.

Since the implementation of the 1st phase, we increased the organic waste diversion program by 70%!



What do you have to do?

1. **Get countertop compost bins** from the City of Aspen for all your tenants – email waste@aspen.gov
2. **Share** the information with the tenants
3. **Contract** with the waste hauler of your preference
4. **Start composting!**



Examples

Burlingame Ranch – 258 units

Hunter Creek – 295 units

Truscott – 196 units

The Fornell – 11 units

Hunter Longhouse – 33 units

Aspen Country Inn – 40 units

Burlingame seasonal – 100 units

Removal Options

You choose the **organics hauler**

You choose the **pick-up frequency**

Reduce trash pick-up frequency

➤ Trash is **+40%** organic waste



Free Resources

Bear Resistant Outdoor container



Hook for lock

Paddle Latching Mechanism

All metal



Bear Resistant Outdoor Container sizes



64-gallon



95-gallon



2 yard

So, what do the residents have to do?

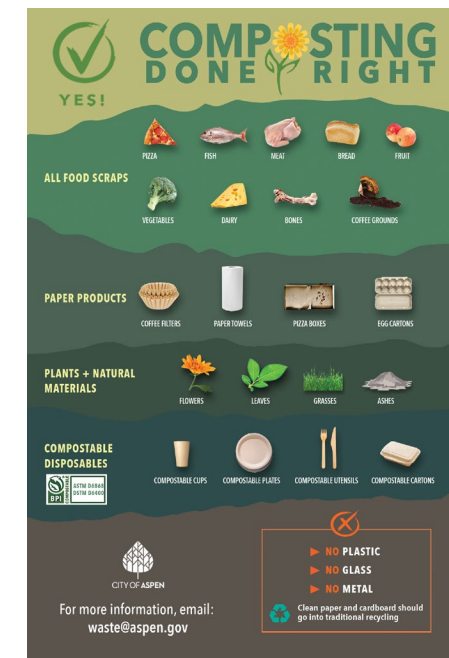
- They collect their food waste on a separate container from the trash and recycling
- They put the food waste in the designated compost dumpster



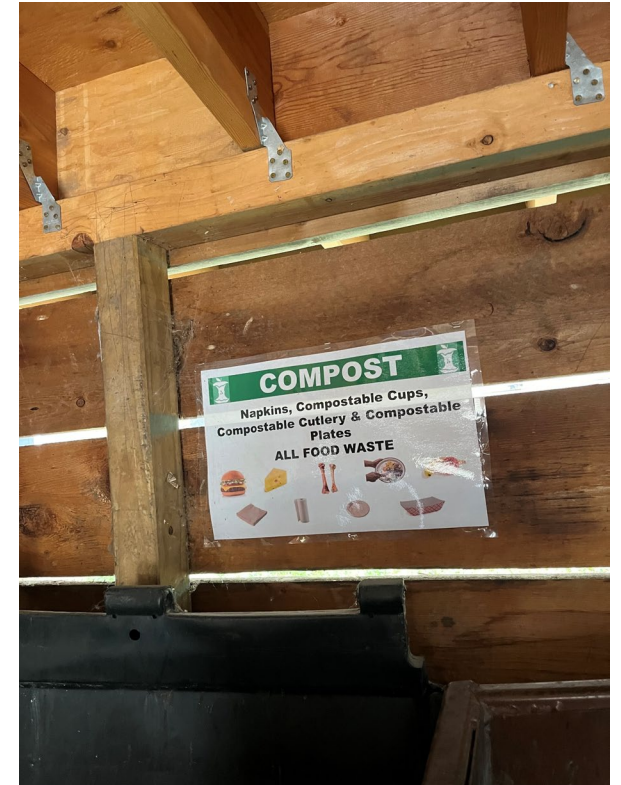
Educational Materials for Tenants and Waste Rooms

Bilingual

Magnets - Postcards - Stickers - Toolkit Laminated signs



Educational Materials for Tenants and Waste Rooms



Educational Materials for Tenants and Waste Rooms



COMPOSTING DONE RIGHT

ALL FOOD SCRAPS

Pizza, Fish, Meat, Bread, Fruit, Vegetables, Egg Shells, Dairy, Bones, Coffee Grounds

PAPER PRODUCTS

Paper Bags, Coffee Filters, Paper Towels, Pizza Boxes, Egg Cartons

PLANTS & NATURAL MATERIALS

Flowers, Grass, Leaves, Ashes

COMPOSTABLE DISPOSABLES

Look for the BPI Compostable logo—only items with this certification break down in Aspen's compost system.



For more information, email waste@aspen.gov or scan the QR code.

NO PLASTIC
NO METAL
NO GLASS

Clean paper and cardboard should go into traditional recycling.



TIPS FOR SEPARATING YOUR SCRAPS



CHOOSE THE RIGHT CONTAINER

PAPER BAG
Useful for lining bins and reducing mess. Great for collecting dry scraps.

CERTIFIED COMPOST BAG
Useful for lining bins and reducing mess. Make sure they are BPI Certified.

COUNTER TOP COMPOST BIN
The City has free containers available! Contact waste@aspen.gov to get yours!

KEEP IT CLEAN

Rinse your bin regularly to avoid odors.

Store in a cool place or freeze scraps until you are ready to empty.

Add baking soda to your scraps to reduce smell.

Line the bottom of your container with paper products to absorb liquids.

HOW-TO

1. Collect food scraps in a kitchen bin.
2. Use paper bags or BPI compostable liners to keep it clean and easy to empty.
3. Empty into the provided bearproof container at your complex.
4. Rinse and repeat.

FREQUENTLY ASKED QUESTIONS

CAN I COMPOST MEAT, BONES, OR CHEESE?
Yes. All of these items are considered to be regular food scraps and can be composted.

CAN I COMPOST MY PET WASTE?
No. Pet waste such as cat litter or dog poop must be disposed of in regular trash.

CAN I COMPOST MY TAKE-OUT CONTAINERS?
Only if they have the "BPI Compostable" label. Otherwise, no.

WILDLIFE SAFETY

Dispose of food scraps in the provided bear proof containers. Never store your scraps outside!



CITY OF ASPEN

For more information, email waste@aspen.gov

Next Steps

1. **Get countertop compost bins** from the City of Aspen for all your tenants – email waste@aspen.gov
2. **Share** the information with the tenants
3. **Contract** with the waste hauler of your preference
4. **Start** composting!

We want to help!

What questions do you
have for us?



CITY OF ASPEN

